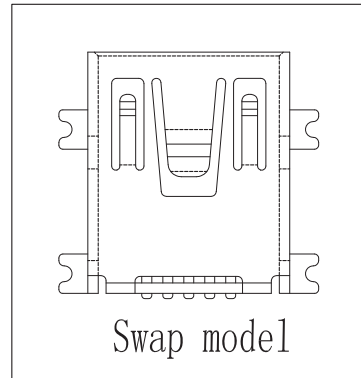
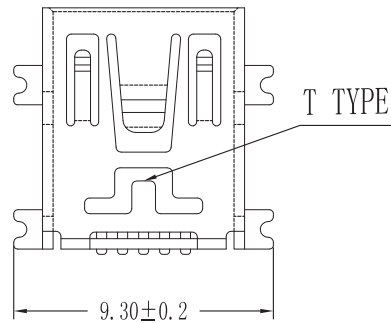


REV	LTR	DESCRIPTION	DATE	REVISER	SHEET
A		NEW RELEASE	2021. 11. 02	JIANG. REN	1/1



Specifications:

Electrical:

1. Current Rating:1.5A Contact terminal
2. Voltage Rating:30V DC
3. Contact Resistance:30 milli Ohms MAX
4. Dielectric Withstanding Voltage:300 V AC AT Sea Level
5. Insulation Resistance:100 Mega Ohms MIN

Mechanical properties:

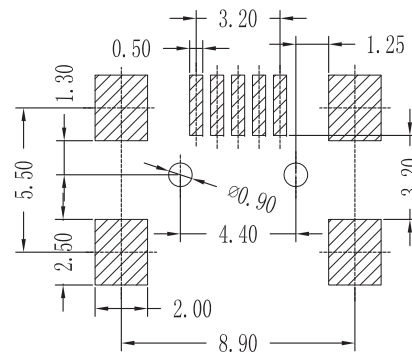
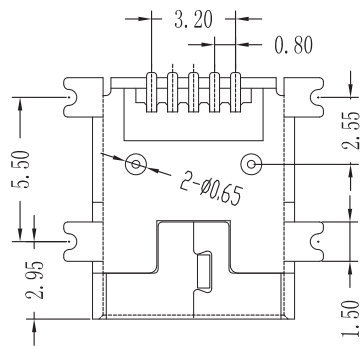
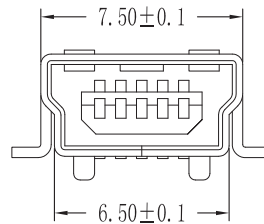
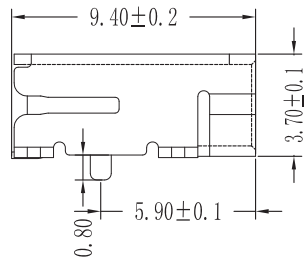
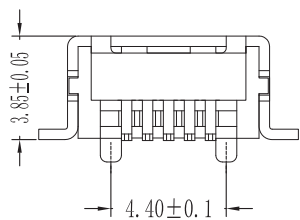
1. USB plug and pull test: 200 cycles per hour, plug and pull 1500 cycles, No functional impairment.
2. USB insertion and pulling force test: Insertion force ≤2kg, Pulling force 1~3kg Take the average of 5 tests. Plug and pull 1500 times after pulling output 0.8~2kg.
3. Salt spray 24H, salt spray collection volume 1.5ml, Temperature 35°C, Humidity 47%.
4. Holding force between PIN and rubber core ≥0.8kg.

Raw material:

1. Plastic cement:Hing Temperature Thermoplastics, LCP Black UL94 V-0
2. Contact:Copper Alloy C5191
3. Shell: Copper Alloy C2680

Electroplate:

1. Contact: Nickel Plating 80-100U";  
Plated Gold 1U" in Mating Area; Tin On Solder Talls 80-100U"
2. Shell:Nickel Plating 80-100U"



RECOMMENDED PCB LAYOUT

FrelTec GmbH

TOLERANCE	ANGLE	TITLE:		
.XXX ±0.10	.XXX° ±1.0°	MINI 5P/F SMT		
.XX ±0.15	.XX° ±2.0°	PART NO. :		DRAWING NO. :
.X ±0.25	.X° ±3.0°	2B2M5FFUBLJ01SMT		USB-05C-10M
		MOLD:	SCALE:	UNIT:
		XXX	1 : 1	mm
		SIZE:	REV.	
		A4	A	
PROJECTION		APPROVED BY	CHECKED BY	DRAWING BY
		SW. MO	LIANG. ZHUO	J. L