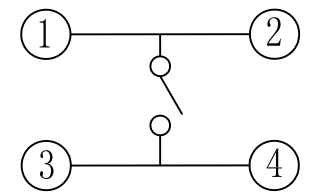
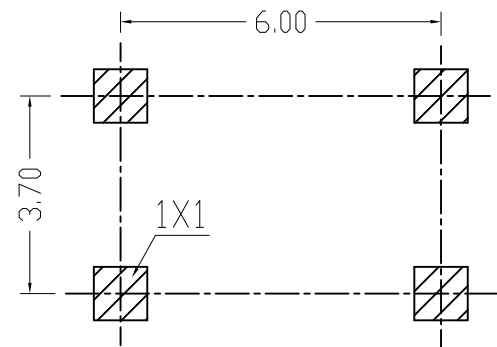
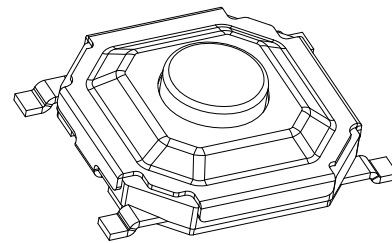
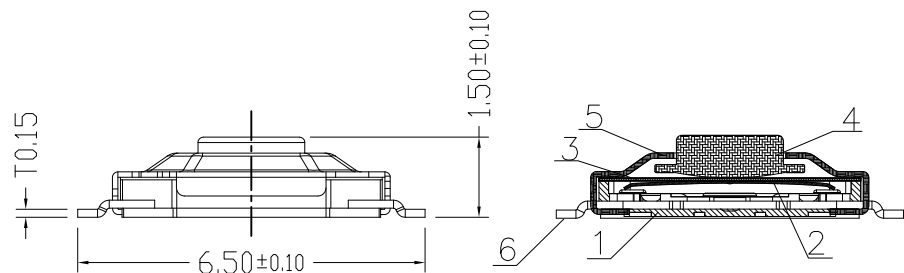


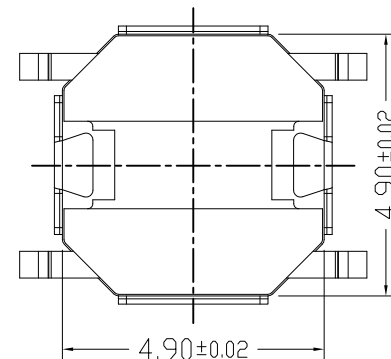
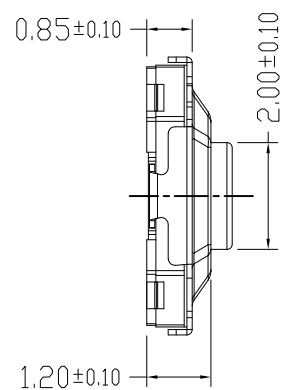
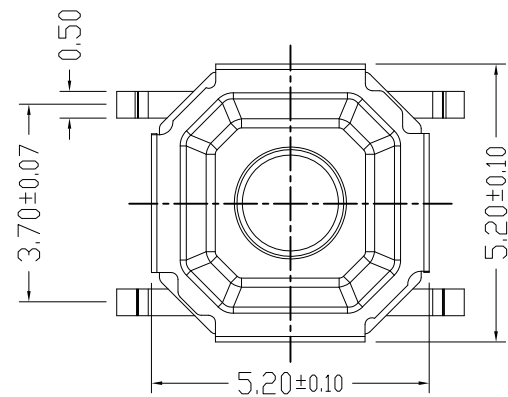
RoHS Compliant

REV	LTR	DISCRIPTION	DATE	REVISER	SHEET
A	/	NEW RELEASE	2016.06.21	Jiang REN	1/1



PCB LAYOUT

SCHEMATIC



Specifications:

- 1. Rating: 50mA DC12V
- 2. Contact Resistance: 100mΩ
- 3. Operating Force: 100±30gf
- 4. Travel: 0.20±0.1mm
- 5. Insulation Resistance: 100MΩ
- 6. Withstand Voltage: 250V 50HZ 1Min.
- 7. Durability: 500,000 Cycles

6	Terminal	1	Metal Parts:Silver-plated Brass	
5	Cover	1	Stainless Steel	
4	Button	1	Brass	
3	Dustproof Film	1	Polyamide	
2	Spring	1	Stainless Steel	
1	Base	1	Plastic Parts:LCP	
No.	Description	Q'TY	Materials	Remark

FrelTec GmbH

TOLERANCE	ANGLE	TITLE: Tactile Switch 5.2x5.2mm			
.XXX ±0.10	.XXX°±1.0°	PART NO.: 4S0TS52BRSPSIL0415		DRAWING NO.: TS-1187	
.XX ±0.15	.XX° ±2.0°	MOLD: XXX	SCALE: 1:1	UNIT: mm	SIZE: A4
.X ±0.25	.X° ±3.0°	APPROVED BY: Vegas LIU	CHECKED BY: Liang ZHUO	REV. A	DRAWING BY: Jiang REN
PROJECTION					

