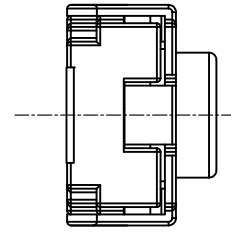
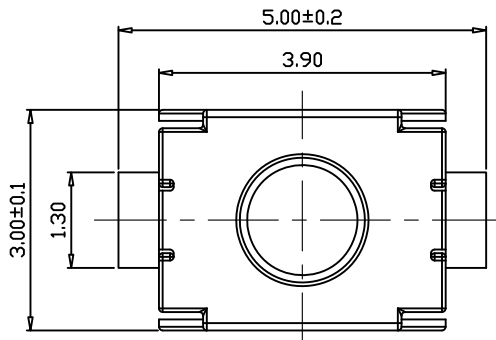
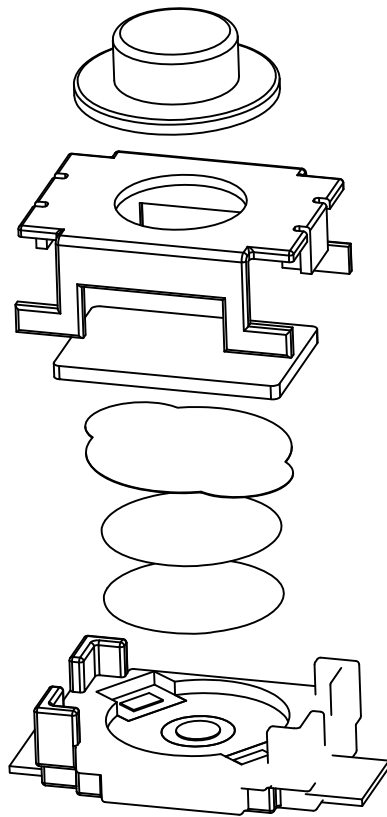
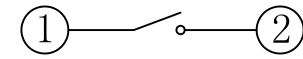


RoHS Compliant

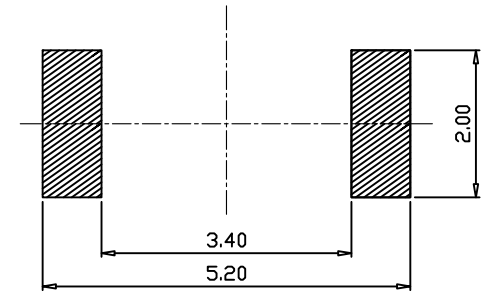
REV	LTR	DISCRIPTION	DATE	REVISER	SHEET
A	/	NEW RELEASE	2016.06.21	Jiang REN	1/1



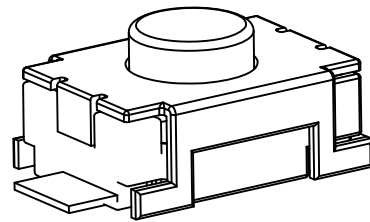
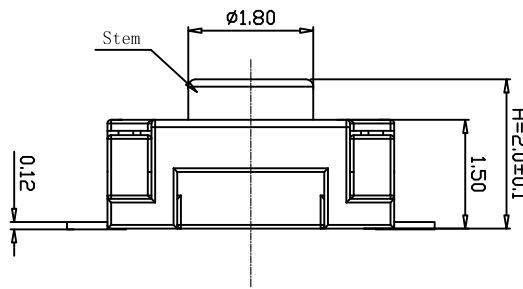
H
1.8
2.0
2.5
3.0



SCHEMATIC



PCB LAYOUT



Specifications:

- 1.Rating: 50mA DC 12V
- 2.Contact Resistance: 100mΩ
- 3.Operating Force: 160±50gf
- 4.Travel: 0.20±0.1mm
- 5.Insulation Resistance: 100MΩ
- 6.Withstand Voltage: 250V 50HZ 1Min.
- 7.Durability: 200,000 Cycles

⑥	Dustproof Flm	Polyimide Film
⑤	Cover	Stainless Steel
④	Spring	Stainless Steel (Silver Coating)
③	Clip	Bronze (Silver Plating)
②	Button	LCP (Black)
①	Base	LCP (Black)
No.	Description	Materials

# FrelTec GmbH

TOLERANCE	ANGLE	TITLE: TS-2002A 3x4xH Tactile Switch			
.XXX ±0.10	.XXX°±1.0°	PART NO.: 4S0TS35BRSPBL0318		DRAWING NO.: TS-2002A	
.XX ±0.15	.XX° ±2.0°	MOLD: XXX	SCALE: 1:1	UNIT: mm	SIZE: A4
.X ±0.25	.X° ±3.0°	APPROVED BY: Vegas LIU	CHECKED BY: Liang ZHUO	REV. A	DRAWING BY: Jiang REN
PROJECTION					

